

5. 

6. 



**Hint**

Do can move. Notice the key signature. The next exercise is in the key of F. Do is now in the first space.

7. 

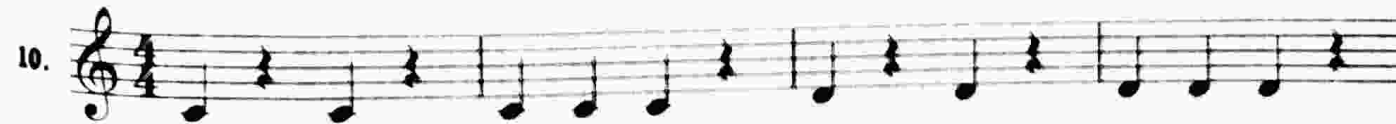


8. 

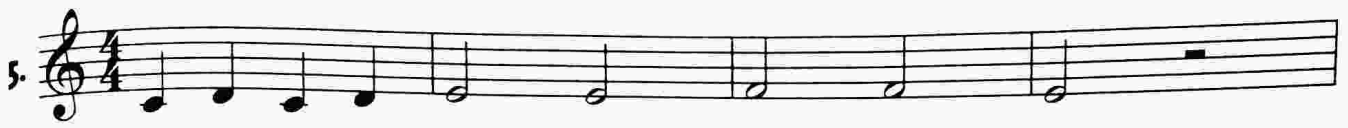


9. 



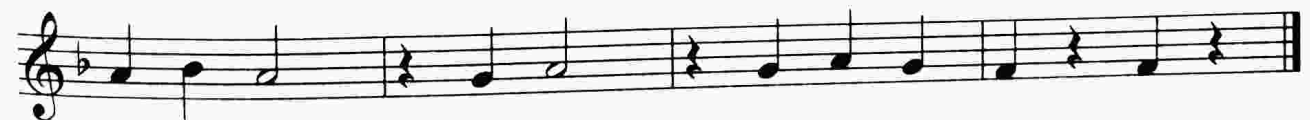
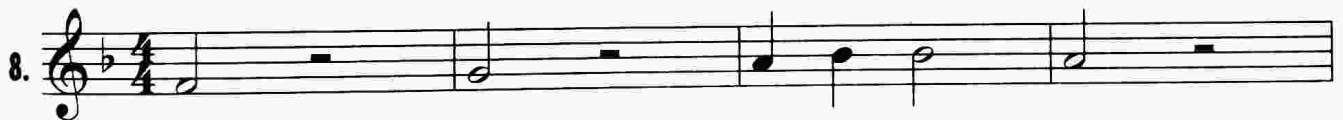
10. 





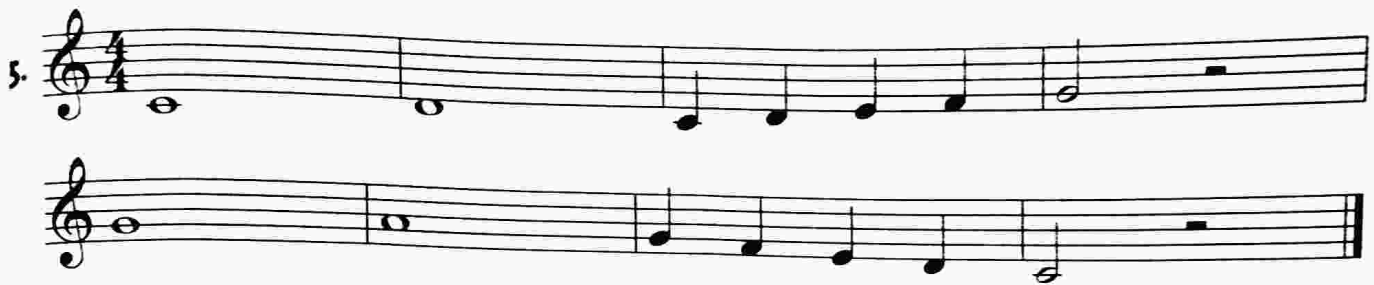
**Hint**

It may be helpful to rehearse the rhythm first, before singing the pitches.



**Challenge Exercise**



5. 

6. 

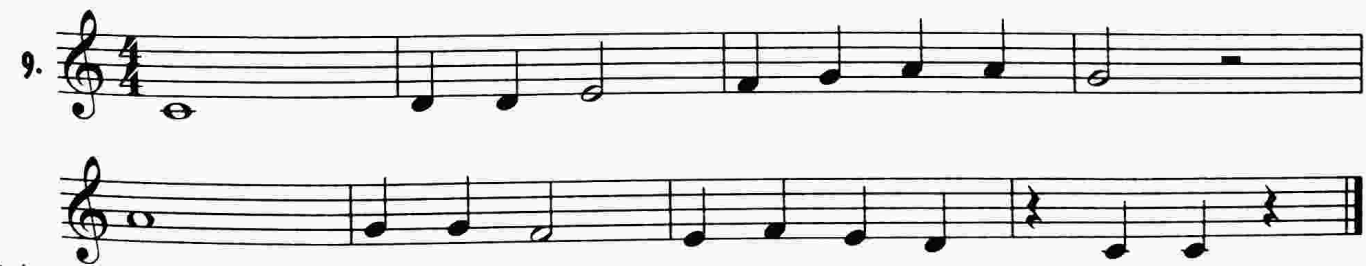


**Hint**

Remember to sit or stand tall.

7. 

8. 

9. 



**Challenge Exercise**

This tune can be performed as a round.

\*Part 2 begins when Part 1 gets to the third measure.

10. 

4.



**Hint**

Remember to take a full, relaxed breath and avoid tension in the throat as you sing.

5.



6.



7.



8.



**Challenge Exercise**

9.



■ Sing with expression...

# Song of Joy

excerpt adapted from Alfred's Choral Designs series\*

Words and Music by  
**JAY ALTHOUSE**

Majestically (♩ = ca. 126-132)

VOICES

PIANO

5

Sing a joy - ful song. Sing it loud and strong.

9

Al - le - lu - ia, al - le - lu! Sing a joy - ful song.

13

17

Sing a song, al - le - lu. Sing it strong.

21

Al - le - lu - ia, al - le - lu! Sing a joy - ful song.