

WHAT CHILD IS THIS ?

Traditional English Christmas carol



1. What Child is this, who, laid to
 2. Why lies he in such mean es -
 3. So bring Him in - - - cense, gold and



rest, on Mar - y's lap is sleep - - -
 tate, where ox and ass are feed - - -
 myrrh, come, plea - sant king, to own



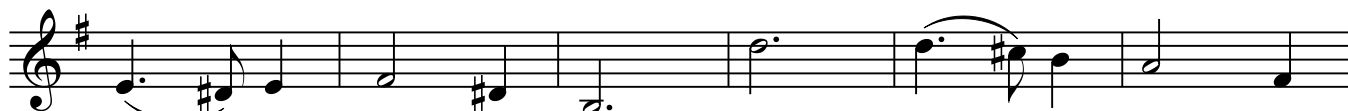
ing? Whom an - gels greet with an - thems
 ing? Good Chris - tian, fear: For sin - ners
 Him: The King of Kings, sal - va - tion



sweet, while shep - herds watch are keep -
 here, the si - lent Word is plead -
 brings; Let lov - ing heart en - throne



ing? This, this is Christ, the King whom shep - herds
 ing: Nails, spear, shall pierce Him through the Cross be
 Him. Raise, raise the song on high, the vir - gin



guard and an - gels sing: Haste, haste to bring Him
 borne, for me, for you: Hail, hail the Word made
 sings her lul - la - by: Joy, joy, for Christ is



laud, the Babe, the Son of Ma - ry!
 flesh, the Babe, the Son of Ma - ry!
 born, the Babe, the Son of Ma - ry!